

PEMF therapy for Human Physiotherapy Pain relief and Animals health care



More Professional



More Intelligent



Higher Configuration



Higher Performance



More Professional

- 1) **With two Interfaces (Human therapy and Animal therapy)**
- 2) **Professional treatment protocol and guidelines**

More Intelligent

- 1) **Intelligent interface switching**
- 2) **Machine output energy can adjust**
- 3) **Different handles with different energy**

Higher Configuration

- 1) **Intelligent interface upgrade, more professional and easy to operate**
- 2) **Diverse work handle selections**
- 3) **High quality foldable screen**

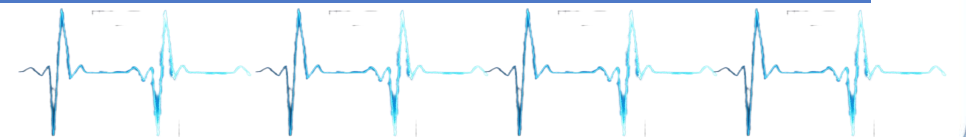
Higher Performance

- 1) **Wider application fields**
- 2) **Short treatment time, good treatment result, fast curative effect**



TECHNICAL PARAMETERS

Power Consumption	850W
Magnetic intensity	Max up to 24700 Guass
Pulse Frequency	1-10Kz MF :2-10-4-8Hz
Oscillation	4500Hz
Fused	1 5Amp
IP rating	IP 31
Attached loops	Single loop/Butterfly loop
Optional loops	Double Paddles /Mattress X-Wing/ Hoof box
Dimension of package	75*58*52CM
Gross Weight	35KG

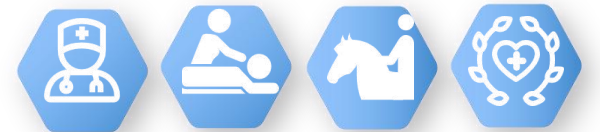
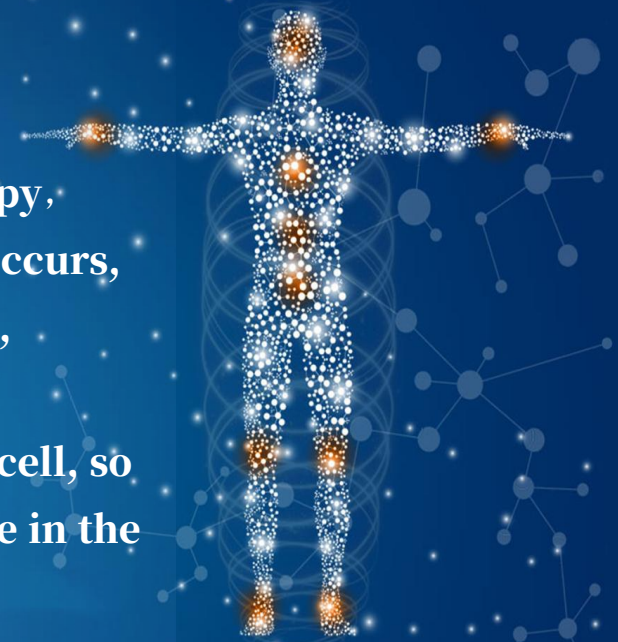


WHAT IS PEMF THERAPY?

Principle

Pulsed Electromagnetic Frequency Therapy is a natural, non-invasive therapy, can safely apply a magnetic field to redirect electrical impulses to the pain occurs, PEMF that directs powerful, pulsed electro-magnetic fields toward damaged, unhealthy cells or injured areas.

The effect of this is an overall improvement in the flow of nutrients into the cell, so relief and healing can begin. PEMF therapy available for clinical or home use in the world!



PEMF Therapy For Human

PEMF recharges and stimulates these unhealthy cells with improved oxygenation and circulation, returning them to normal function. PEMF is said to improve cellular absorption of oxygen and nutrients, while eliminating toxins, resulting in reduction of inflammation, reduction in pain, and improved recovery times.



Positive Physiological Effects For Human

Pain Relief

PEMF stimulates the production of natural endorphins and therefore is very effective in dealing with pain, particularly in conditions like osteoarthritis, fibromyalgia, and postoperative pain.



Inflammation Reduction

Evidence suggests that PEMF therapy may help reduce inflammation in certain conditions, such as rheumatoid arthritis

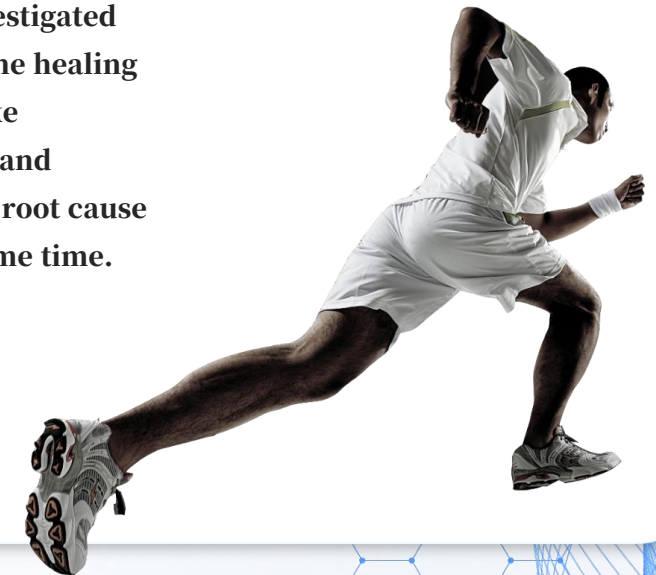


Bone Regrowth

PEMF therapy has been investigated for its potential to aid in bone healing and help with conditions like osteoporosis and fractures, and consequently addresses the root cause and the symptoms at the same time.

Sleep Improvement

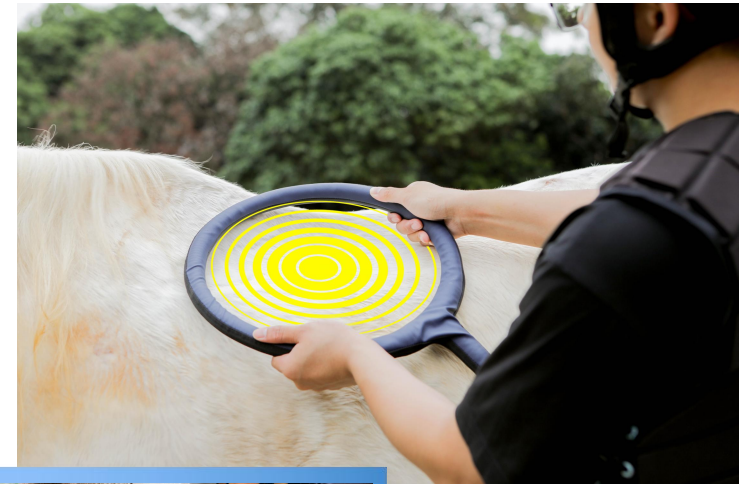
Some studies suggest that PEMF therapy may help improve sleep quality and duration. It's believed to influence brainwave patterns and promote relaxation.





PEMF Therapy For Animals

PEMF (Pulsed Electromagnetic Field) therapy has been used for animals to promote healing and overall well-being. It involves the use of electromagnetic fields to stimulate cells and tissues in the body. PEMF therapy may help reduce pain and inflammation in animals, have potential effects for animals.



Positive Physiological Effects For **Animals**

Improved Mobility

Animals with mobility issues, such as older pets or those with musculoskeletal conditions, may experience improved joint flexibility and range of motion with regular PEMF treatment.



Immune System Support

The electromagnetic stimulation provided by PEMF therapy may help boost the immune system in animals, making them better equipped to fight off infections and illnesses.



Enhanced Healing

PEMF therapy may promote faster healing of injuries, fractures, and wounds by increasing blood flow and stimulating cell regeneration.



Better Performance

Some owners and trainers believe that PEMF therapy can help improve a horse's performance by enhancing flexibility, reducing soreness, and promoting overall health.



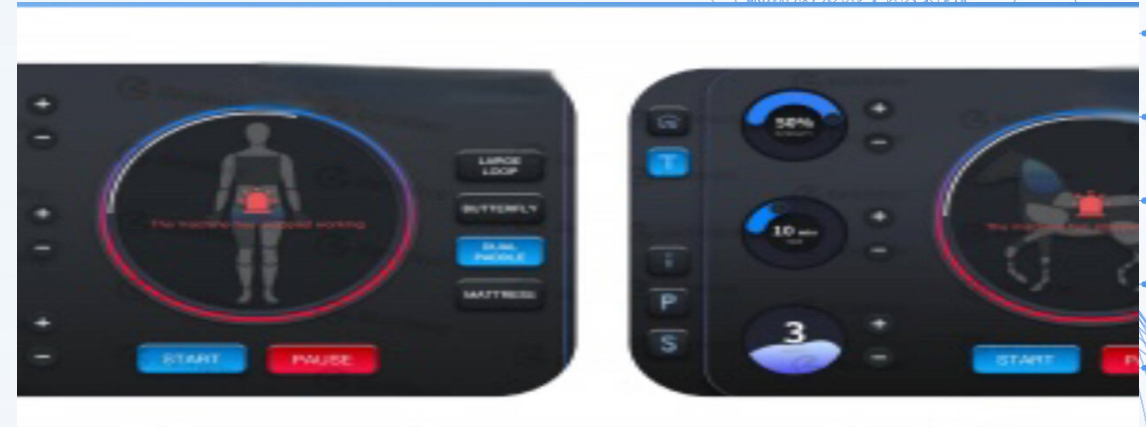
Advantages

Interface



Intelligent switching interface program

- Realize simultaneous switching between human and animal interfaces
- A high-value machine can not only treat humans but also animals



Human Therapy Interface

Animal Therapy Interface



Energy

Energy range: 10-100% (up and down range is 10%)

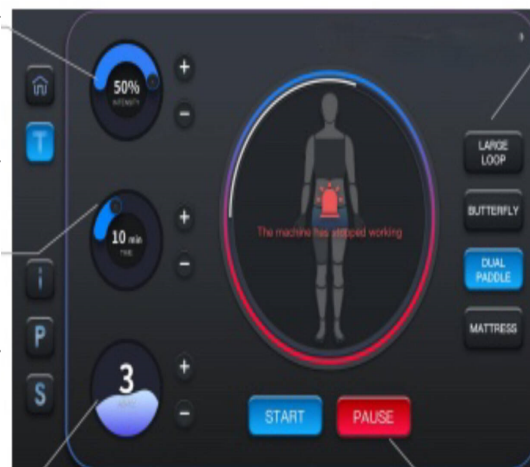
Treatment Time

1-30mins(up and down range is 1 min)

Treatment Frequency

1) Fixed frequency mode: 1-10Hz (up and down range is 1Hz)

(2) Multiple frequency mode: 2Hz-10Hz-4Hz-8Hz ;



Treatment Loop Selection

1) For Human: Large Loop/ Butterfly Loop/ Dual Paddle/ Mattress

2) For Animals: Large Loop/ Butterfly Loop/ Dual Paddle/ X-Wing/ Hoof Box

Treatment Buttons

1) Start

2) Pause

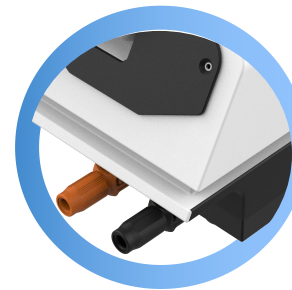
- **Foldable screen**
- **High-end and fashionable design**
- **Suitable for different application scenarios**



- **Intelligent switching interface program**
- **Can not only treat humans but also animals**
- **Professional and flexible user guidelines**



- **12.1 Inch Touch Screen**
- **High-sensitivity smart touch screen**
- **User-friendly, More Convenient and professional**



- **Pluggable replacement handle**
- **high quality and safe plug-in ports**

Working Handles For Human



Larger Loop

Suitable for back, belly and
buttocks



Butterfly Loop

Suitable for knees, elbow
and joints



Dual Paddle

Soft material for body
treatment



Mattress

Comfortable whole body
treatment

Working Handles For **Animals**



Larger Loop

treatment for large areas, including shoulder, neck, thigh and back.



Butterfly Loop

hands-free operation on hocks, cannons, and other small body parts



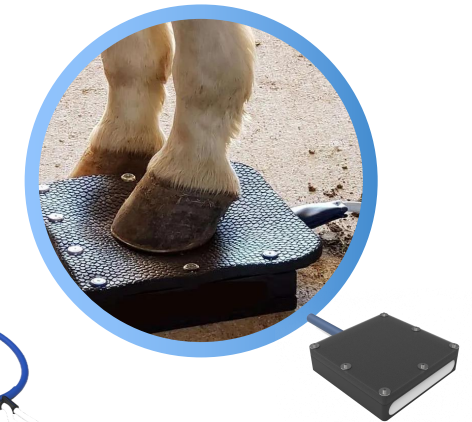
Dual Paddle

Can treat any part of the body, it can be opened to use on both sides of neck, hocks, thighs.



X-Wing

It can apply to head, stifle, thigh, and back



Hoof Box

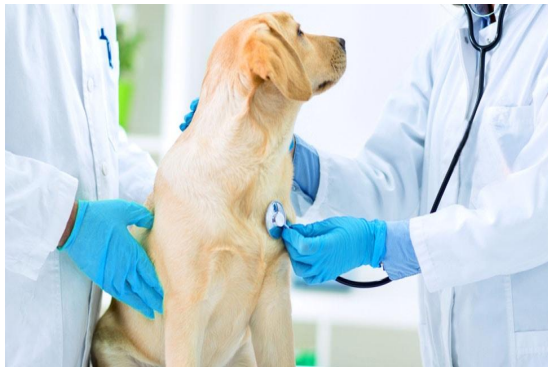
Special design for horses hoof treatment



Clinic Use



Pet Health Center



Sports Center



Veterinary

